



RACHEL QUERREVELD, ***SOPRANO***

Versatile and radiant soprano, **Rachel Querreveld**, began her operatic career at the age of 16 at the Sarasota Opera House. She went on to perform throughout South Florida in operas such as *Suor Angelica*, *Dido and Aeneas*, and Golijov's *Ainadamar*.

Rachel launched her concert work with her New York City debut at Carnegie Hall. She has since been featured as a soloist with the Central California Youth Wind Ensemble, Sarasota Church of the Palms Orchestra, Venice Performing Arts Series, and the Athena Music Foundation NYC. Her past international engagements include a touring concert series throughout Emilia-Romagna, Italy in theaters such as Novafeltria Teatro Sociale and Teatro Mariani in Sant'Agata Feltria. In Mozart's birth city of Salzburg, Austria, Rachel was featured in a concert series of his works.

In addition to opera, Rachel is an established musical theater and operetta performer, praised for her bell-like voice with "tones that borrough back to the singing of Snow White in the Disney classic" (Cape News). Her favorite roles include Gretchen in Victor Herbert's *The Red Mill* and Betty Blake in Cy Coleman's *The Will Roger's Follies*. A strong believer in the impact of Outreach, Rachel co-wrote and performed the title role in *OPERApunzel*, an outreach children's opera with Discover Opera! which was featured in the New York Times. She has also written and performed in various cabaret shows throughout New York City in locations such as *Feinstein's/54 Below* and *Don't Tell Mama*.

Rachel enjoys working with composers in the creation of new operas, and recently debuted the role of Enid in *The Interaction Effect* by Pamela Stein-Lynde with American Opera Projects. Her scenes work includes Lady With Handmirror in Dominick Argento's *Postcard from Morocco* and The Controller in Jonathan Dove's *Flight*.

Rachel holds degrees in Operatic Performance from the University of Miami, Frost School of Music (B.M.) and The Manhattan School of Music (M.M.). She serves as Soprano Section Leader and Choral Scholar at the esteemed Cathedral of Saint John the Divine in New York City.



MIA Artists Management

RACHEL QUERREVELD, SOPRANO

OPERATIC REPERTOIRE

Argento:

Lady With Handmirror - *Postcard from Morocco*

Donizetti:

Linda - *Linda di Chamounix*

Marie - *La fille du Regiment*

Norina - *Don Pasquale*

Dove:

Controller - *Flight*

Gounod:

Juliette - *Romeo and Juliette*

Humperdinck:

Gretel - *Hansel und Gretel*

Massenet:

Sofie - *Werther*

Moore:

Baby Doe - *The Ballad of Baby Doe*

Mozart:

Susanna, Barbarina - *Le nozze di Figaro*

Despina - *Così fan tutte*

Zerlina - *Don Giovanni*

Blonde - *Die Entführung aus dem Serail*

Pamina, Papagena - *Die Zauberflöte*

Offenbach:

Olympia - *Les contes d'Hoffmann*

Puccini:

Lauretta - *Gianni Schicchi*

Musetta - *La bohème*

Sister Genovieffa - *Suor Angelica*

Strauss, J.:

Adele - *Die Fledermaus*

Verdi:

Nannetta - *Falstaff*

Gilda - *Rigoletto*



MIA Artists Management

RACHEL QUERREVELD, SOPRANO

OPERETTA AND MUSICAL THEATER REPERTOIRE

Gilbert and Sullivan:

Josephine - *H.M.S. Pinafore*
Mabel - *Pirates of Penzance*
Rose - *Ruddigore*

Herbert:

Gretchen - *The Red Mill*

Rodgers and Hammerstein:

Cinderella – *Cinderella*
Julie – *Carousel*

Weber:

Christine – *Phantom of the Opera/Love Never Dies*

Weill:

Tina - *Knickerbocker Holiday*

Willson:

Marian - *The Music Man*
Maria – *The Sound of Music*

ORCHESTRAL/ORATORIO REPERTOIRE

Brahms:

Requiem

Fauré:

Requiem

Handel:

Joshua
Messiah
Samson

Mozart:

Requiem



MIA Artists Management

RACHEL QUERREVELD,
SOPRANO

CONDUCTORS

Chase Anderson
Lochlan Brown
Andrew Bourgoin
Beth Burrier
Andrew Crust
Rachel Dean
Todd Florin
Jonathan Heaney
Alan Johnson

Kristen Kemp
Mina Kim
Caren Levine
Zach Manlapid
Jesse Martins
Steven Osgood
Miles Plant
Alejandro Senior

OPERA HOUSES/THEATERS

Carnegie Hall
Cathedral of St. John the Divine
Greenfield Music Hall
Gusman Music Hall
Miami Music Festival
54 Below

Novafeltria Teatro Sociale
Opera America, National Opera Center
Piazza San Francesco, Ravenna
Sarasota Opera
Teatro Mariani Sant'Agata Feltria



MIA Artists Management

RACHEL QUERREVELD, SOPRANO

REVIEWS

“[Her] tones brought me back to the singing of Snow White in the Disney classic. It’s a type of singing we don’t hear so much anymore. It’s beautiful.”

- Cape News

“Rachel Querreveld plays Gretchen, who twirls and glides through the company like a yellow butterfly, albeit a scheming one. Her soprano is excellent each time she sings, and, fortunately, she sings a lot.”

- Cape Cod Times

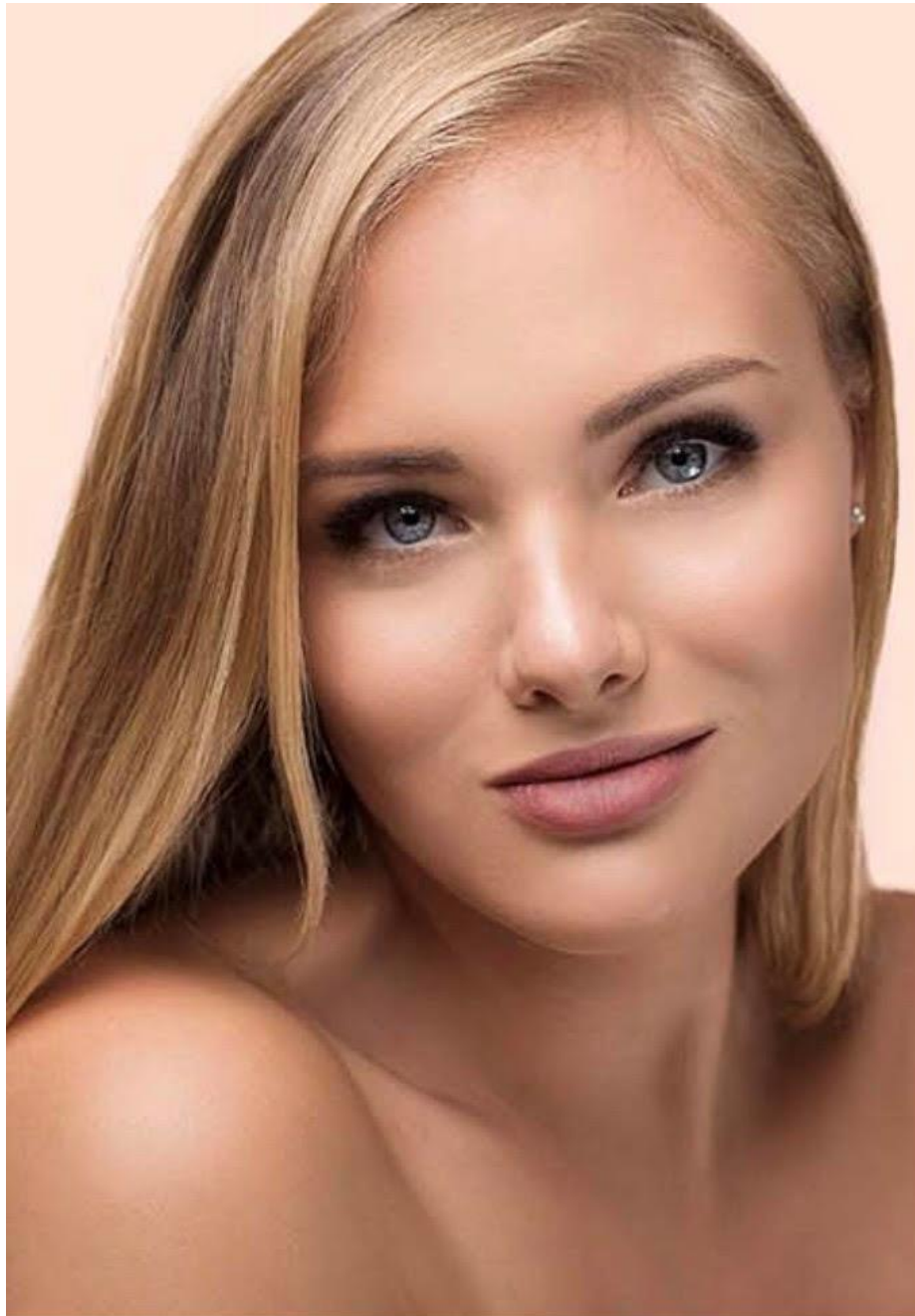
“The sextet, with Querreveld’s soprano soaring over the top of the quintet’s melodious harmonies, is the musical equivalent of puff pastry with chocolate sauce. It’s delicious.”

- Cape Cod Times



MIA Artists Management

***RACHEL QUERREVELD,
SOPRANO***



205 W. 88th St., Suite 13A*New York, NY*10024*646-620-1313*305-259-4398(fax)*Email: Info@MIAArtists.com
www.mia-artists.com